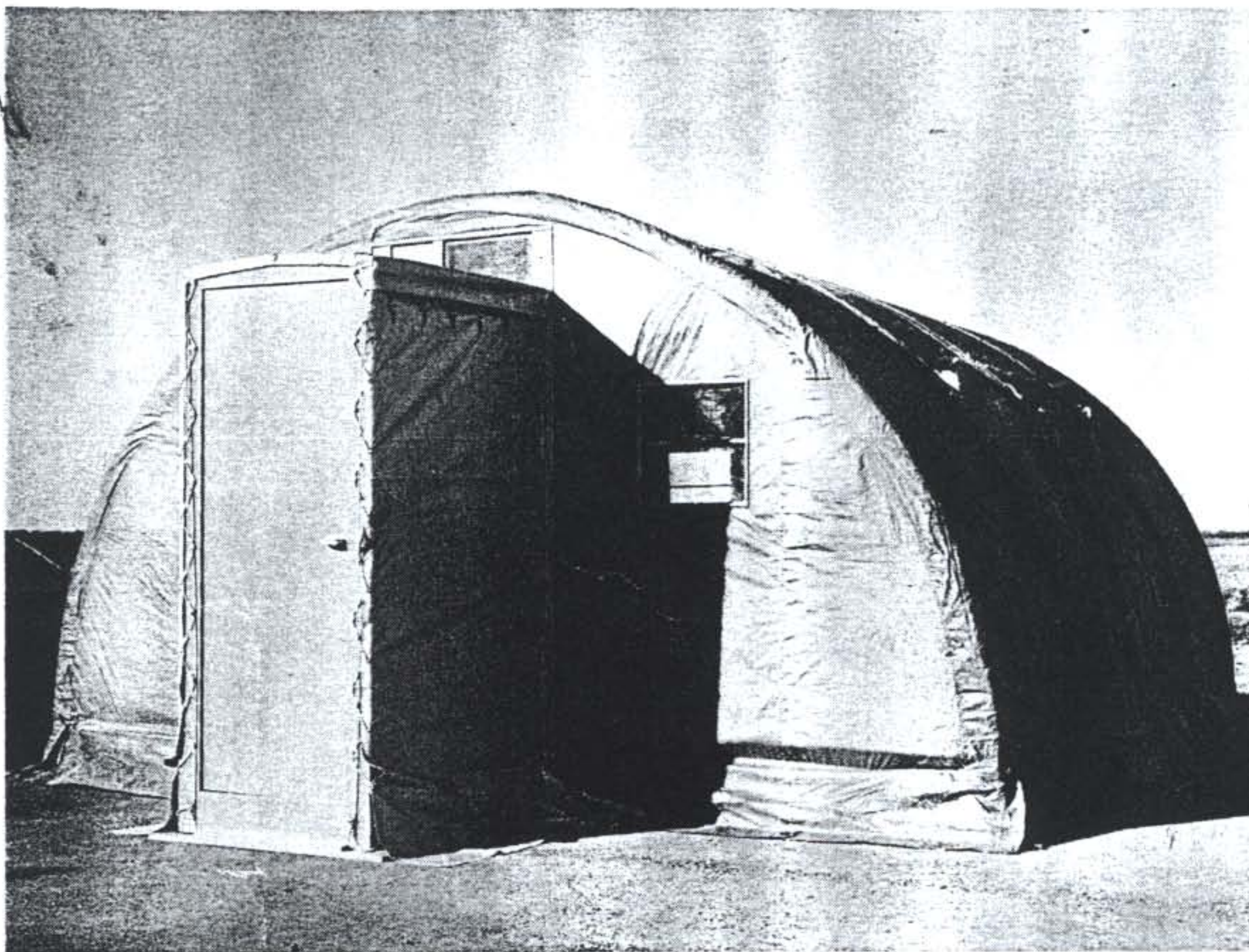


16' x 20'



# ERECTION INSTRUCTIONS

## PARCOLL HOUSING UNIT

**MODEL**  
**HU 105**



**PRODUCTS LIMITED**



1. Assemble boxes and crates adjacent to chosen site.
2. Level site and compact area two feet larger than Unit to be erected.
3. Remove runners from Box #2 and #4 and lay down in the following manner.
4. Open Box #1 and empty contents. Extend Box to 16' length and place at front of runner layout with walking surface up and door sockets to outside.

NOTE: Square #1 Box carefully as its position governs the balance of the floor sections.

5. Place balance of floor sections into position behind #1 Box carefully overlapping mitred edges of floor panels.

NOTE: Bottom edges of plywood are held together by clamping brackets near centre of hinged boxes.

6. Adjoining floor panels are then clamped together using Corner Arch Base Brackets (FIGURE 1), and Arch Base Brackets (FIGURE 2), and Intermediate Base Brackets (FIGURE 3).

Use Corner Arch Base Brackets at Corners of floor assembly. Use Arch Base Brackets at 4' intervals. Use Intermediate Base Brackets between others.

NOTE: See (FIGURE 4) for completed floor assembly.

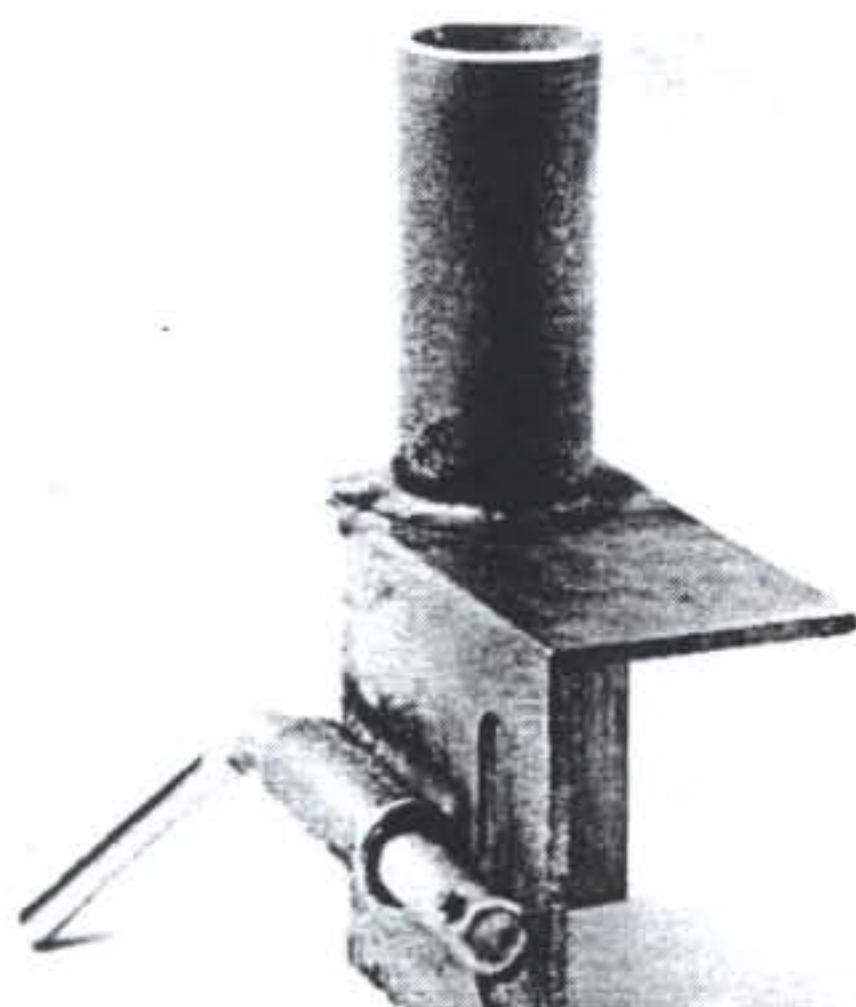
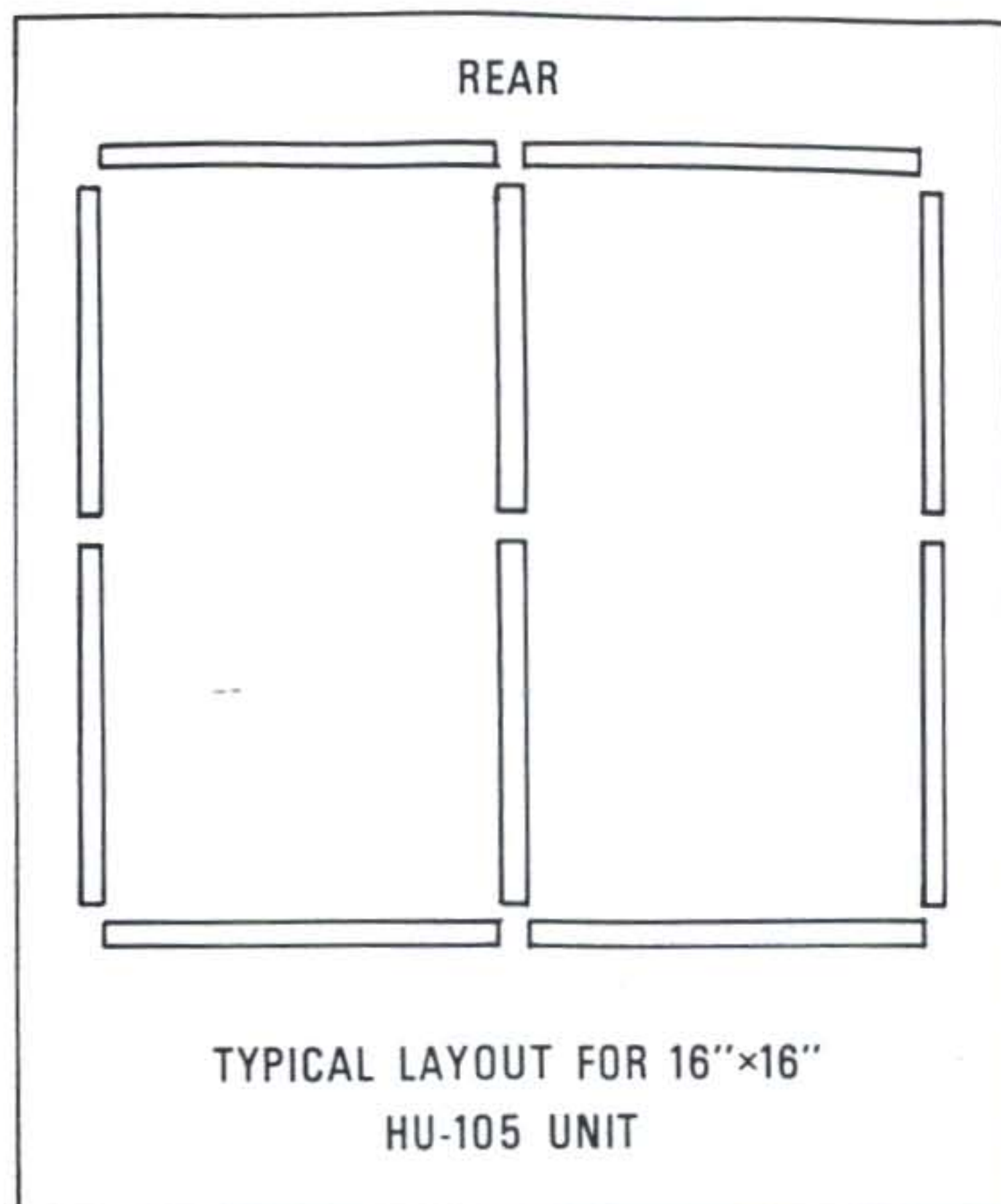


FIGURE 1  
Corner arch  
base bracket

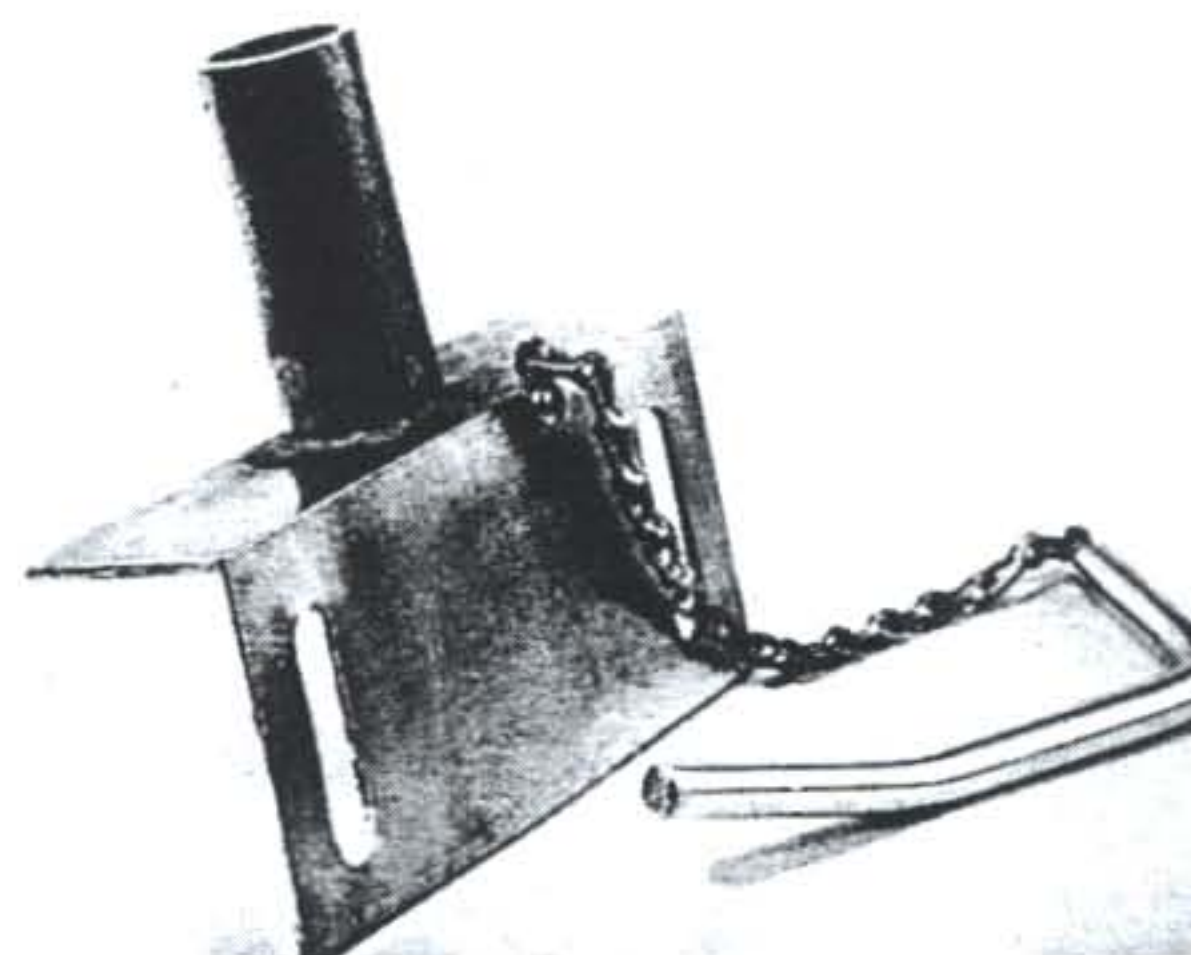


FIGURE 2  
Arch base  
bracket

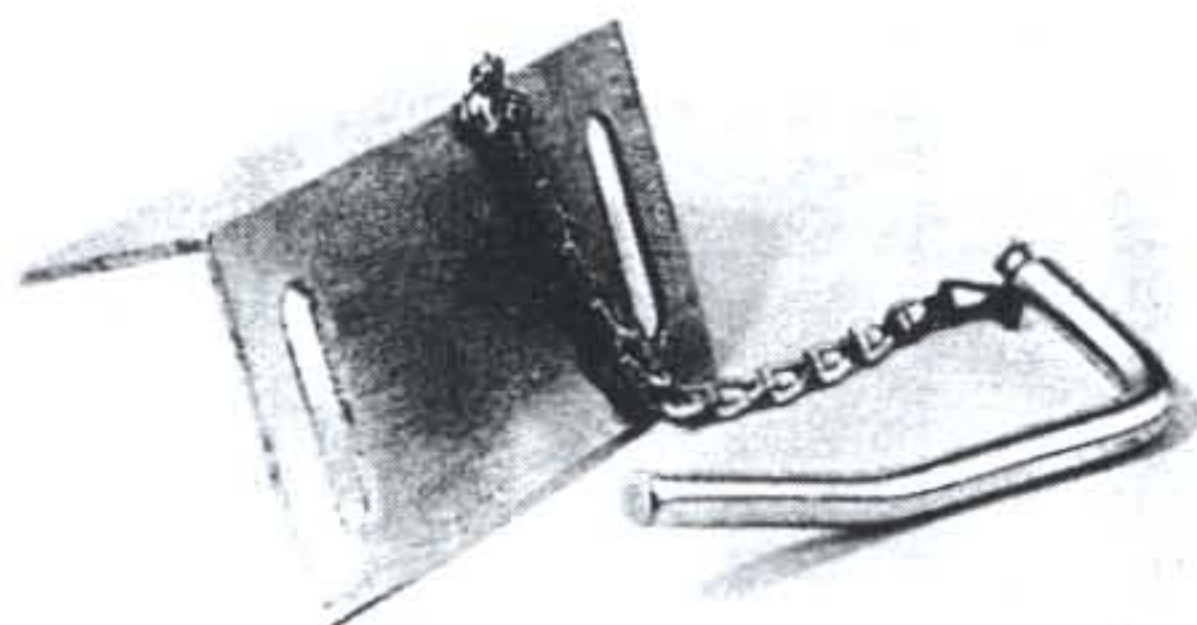
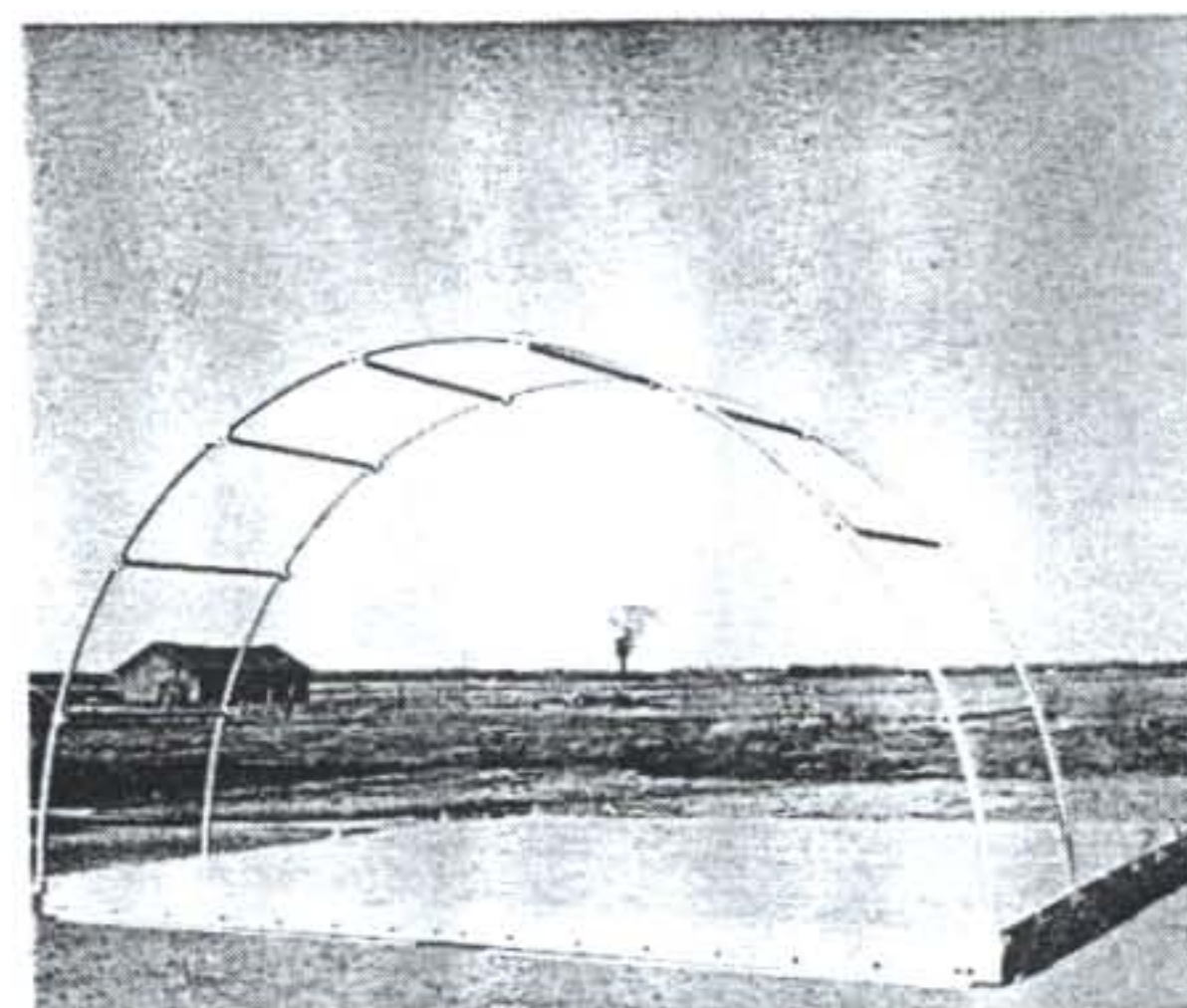


FIGURE 3  
Intermediate  
base bracket

FIGURE 4  
Floor assembly





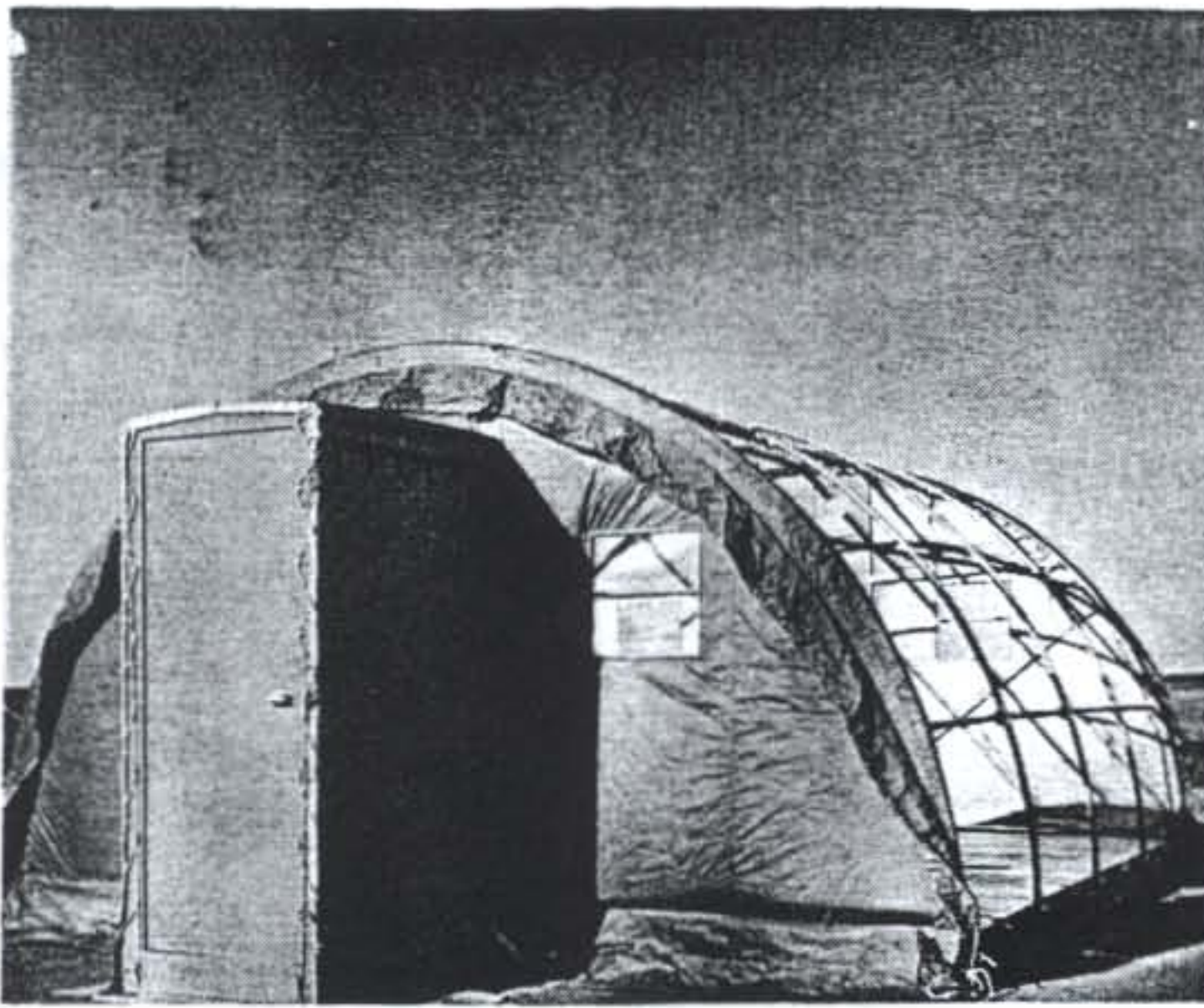


FIGURE 8

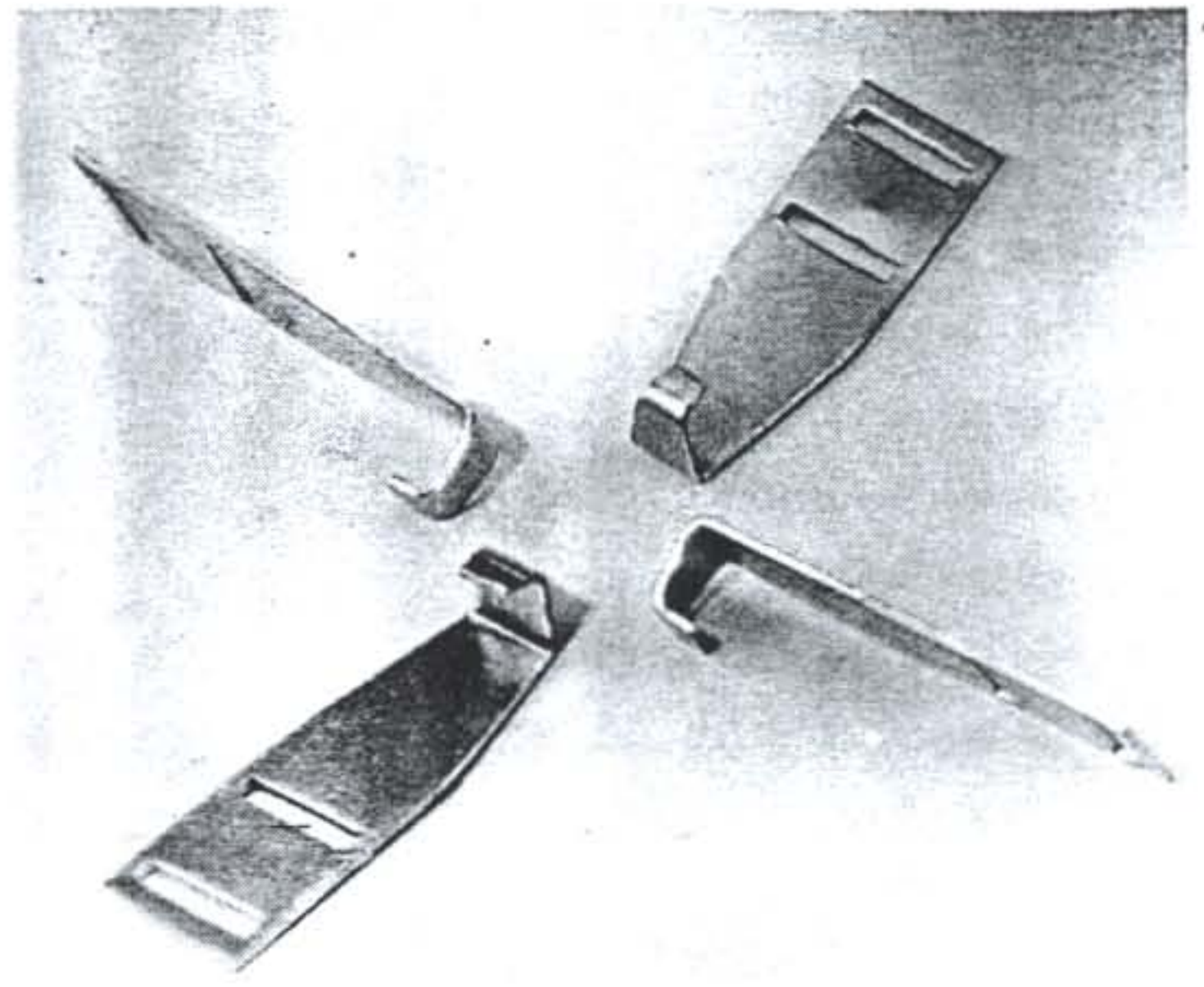


FIGURE 9  
SLIDE BUCKLES

10. Vestibule may be completed at this stage if Unit is equipped with one. (SEE FIGURE 8).  
NOTE: (TIE ALL ROPES TIGHT).

11. Roof Blankets, which are interchangeable may be installed now by covering one four foot section at a time, fastening by rope in pocket as on end wall and using slide buckles (FIGURE 9) on web straps at floor level either side of Unit.

NOTE: (Heating Unit may be installed prior to fastening all buckles to facilitate more comfortable conditions.)

12. Insulated Bands, fitted with guy ropes, are now placed over each arch and tightened at either side using rop-locs.

13. Wind flaps on front and rear end walls are now wrapped over arches and tightened securely.

14. Final step in assembly is lacing blankets inside and tying all tabs and lugs inside and out.

NOTE: (TIE ALL ROPES TIGHT).



FIGURE 10



7. Assemble curved aluminum arches by joining three arch segments together, with arch connectors, to form semi-circle. Stand arch up and fit ends over stems on corner arch base brackets and on arch base brackets for subsequent arches.

8. Joining Purlins are used to connect arches together. (SEE FIGURE 5).

NOTE: Slotted purlin tip is made to fit very snugly on purlin plates (on arches) requiring considerable force on initial fitting. Twisting rather than hitting is recommended.

9. Following complete assembly of Arches and Purlins, the front and rear end walls are erected. Male projections on bottom of threshold are fitted into socket plates on floor, then door frame is positioned under first arch and securely fastened with "U" brackets at top of door frame.

End Wall Purlins (wood) are then fitted between door frame and arch, (short purlins above window horizontally, long purlins below window diagonally.)

Slight adjustment may be required later to match up purlins with tabs on blankets.

Long web straps on curved outer edge of end blankets are directed over first arch and under second arch and looped around purlin then fastened with buckle on strap.

Pocket, containing rope on outer edge of blanket, is wrapped over first arch and tightened at either side by using rope locs (FIGURE 7).

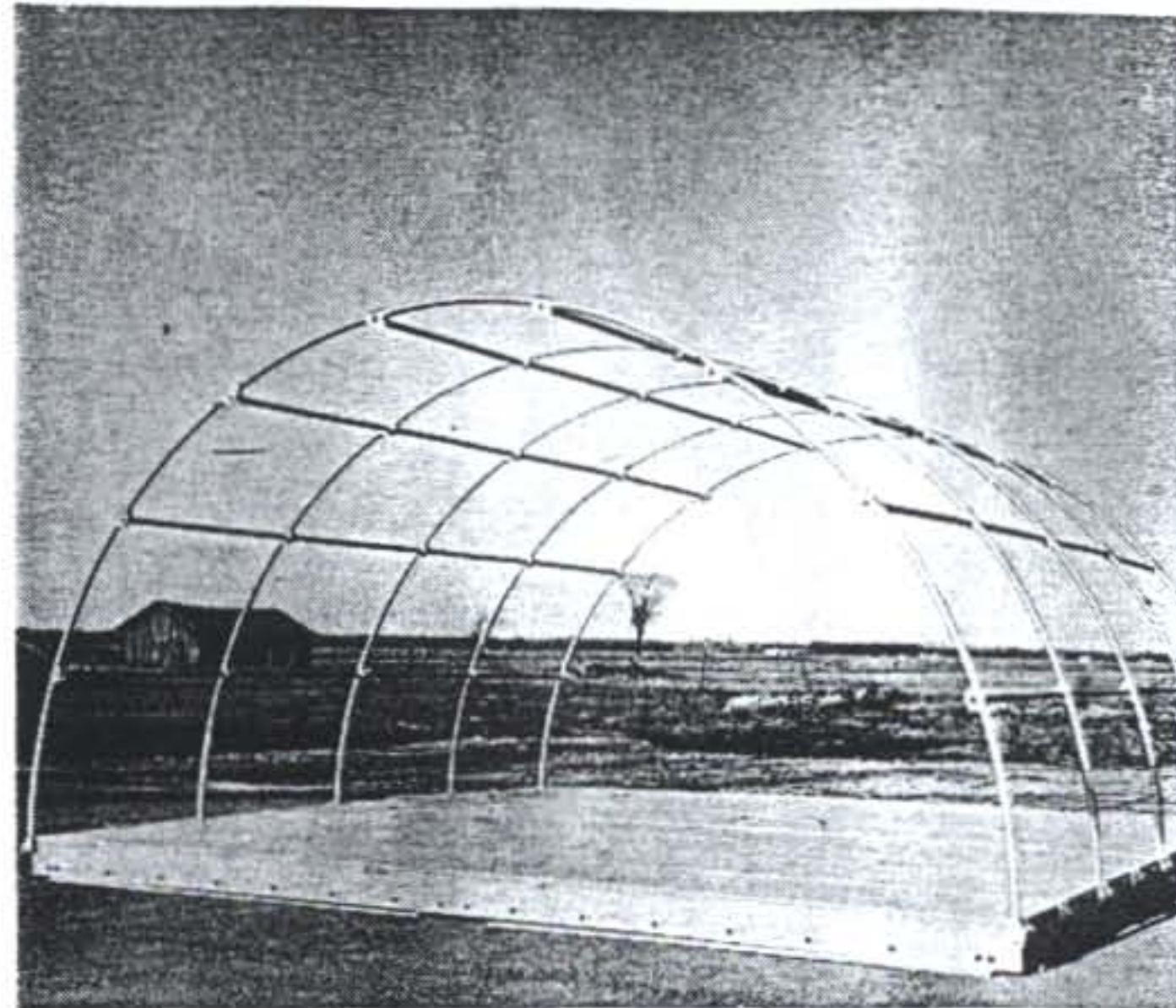


FIGURE 5

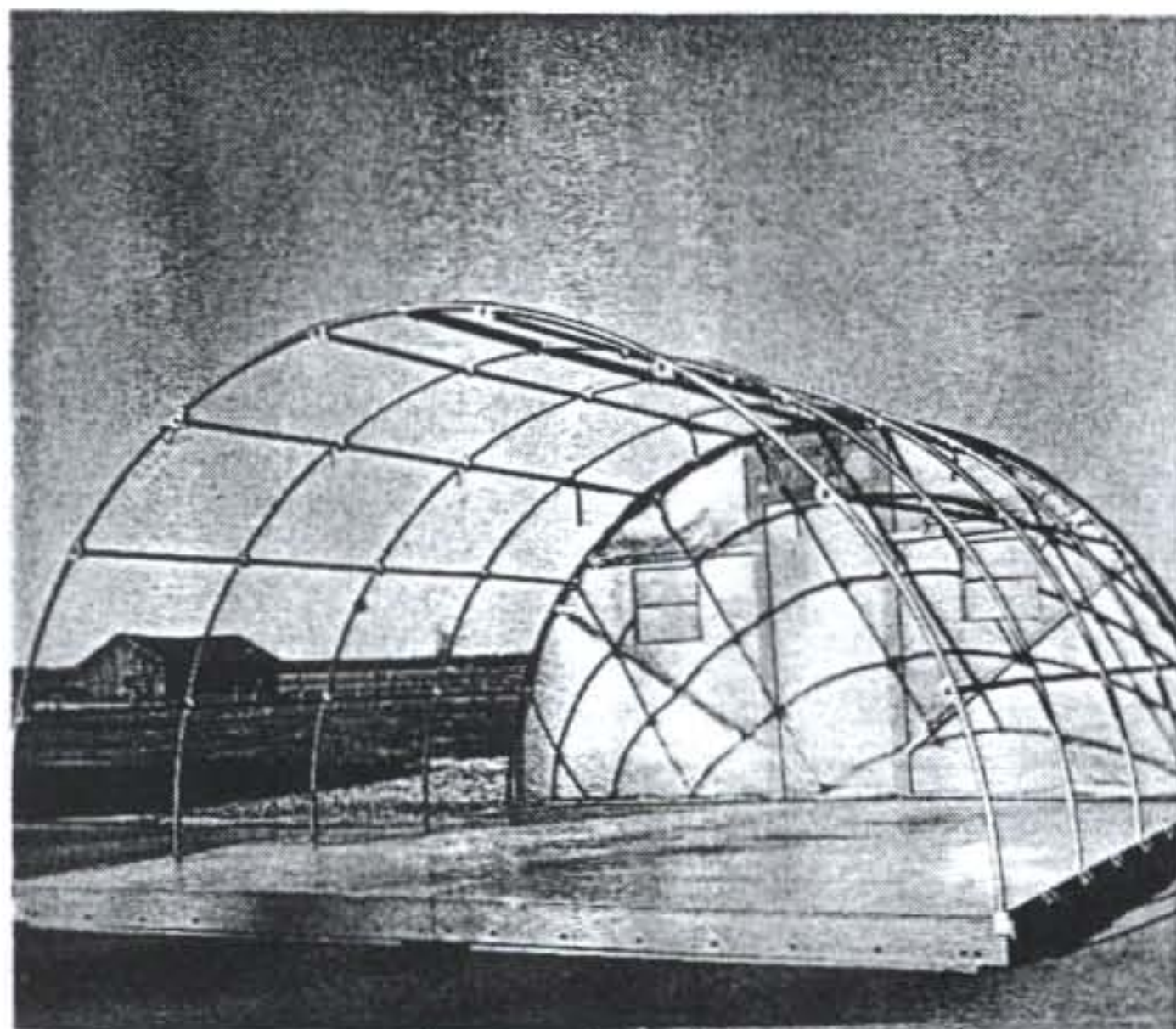


FIGURE 6

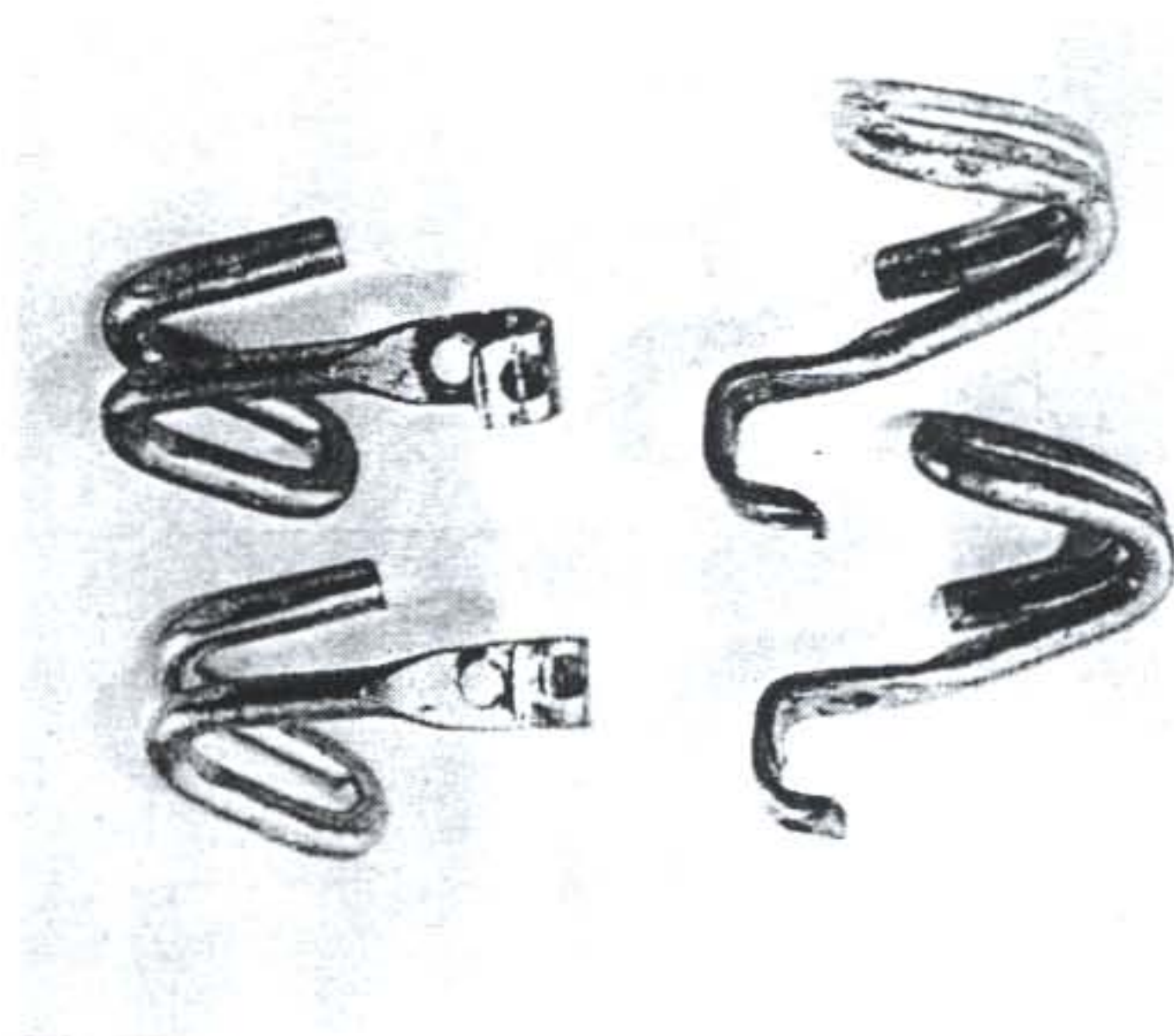



FIGURE 7  
ROPE LOCS




## 5 - SECTION PARCOII


5 - BLANKETS. + 4 - BLANKET STRIPS.

2 - END BOXES FRONT AND REAR. + 8 BOXES.


12 - END WALL CONNECTORS → 

18 - RIBS. 

40 - SPACERS. 

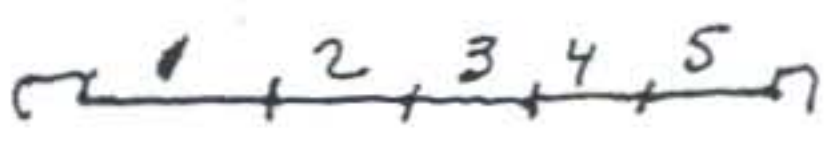
12 - Rib JOINERS. 

10 - FLAT PEICES. 

8 - Rib SUPPORTS 

2 - Rib SUPPORT LEFT CORNERS,

2 - Rib SUPPORT RIGHT CORNERS.

5 - WOOD PEICES - ROOF BRACES 

4 - LONG WOOD PCS - END WALLS.

4 - SHORT WOOD PCS - END WALLS.